

ENHANCED HOME/AWAY KIT

Rescue Alert has engineered, built and tested tens of thousands of RA400 PERS units. An astute service representative noticed a potential problem with the unit's HOME/AWAY switch.



If pressure is applied to the slide switch perpendicular to the face of the RA400 as shown, the internal actuator may bind against an internal component. This may prevent the RA400 from switching to the AWAY mode of operation.



Note: This would not prevent normal operation of the RA400 in the event of an emergency. The Emergency Response Center may receive a few false Inactivity or Check-In signals if the customer left the home and the unit did not switch to the AWAY position properly. If the AWAY light turns on, the RA400 switched properly to the AWAY mode of operation.

If a HOME/AWAY Enhancement Kit is not available, the HOME/AWAY switch can still be operated without any difficulty by placing the thumb on the front of the unit and gently sliding the HOME/AWAY switch down without applying any inward pressure to the face of the RA400.



Installation of the HOME/AWAY Enhancement Kit

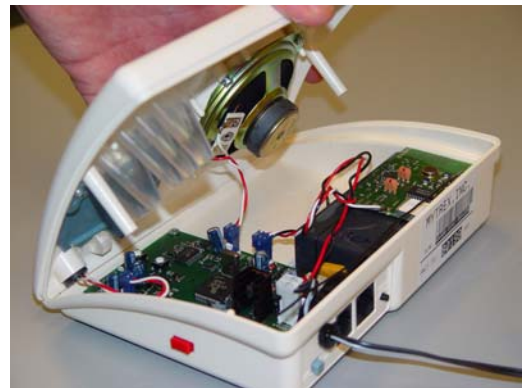
1. Your new HOME/AWAY Enhancement kit includes four (4) new screws and an Enhanced HOME/AWAY slide.



2. Unplug the RA400 from both the AC electrical outlet and the telephone wall connection.
3. Turn off the power switch on the rear of the RA400.
4. Remove the two screws from the bottom of the RA400.



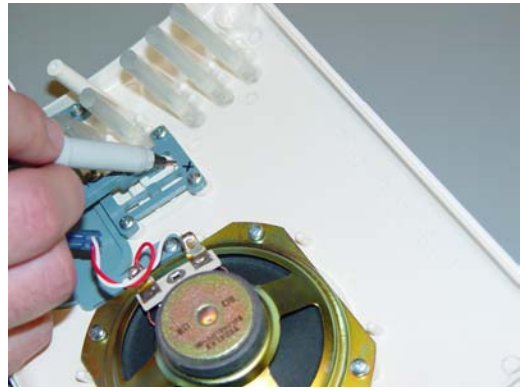
5. VERY CAREFULLY, lift the rear of the top cover from the RA400 as far as possible without straining the speaker and microphone wires.



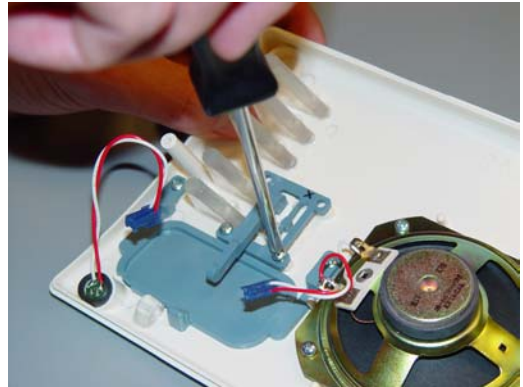
6. Unplug the speaker wire and the microphone wire from the circuit board.



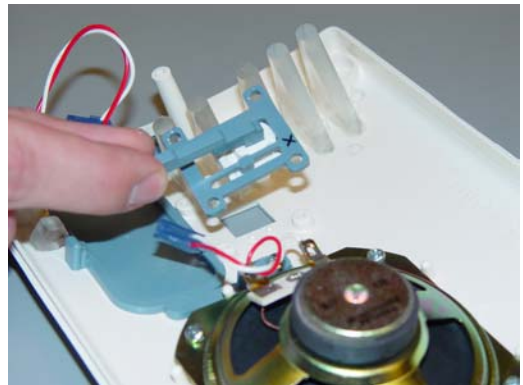
7. Using a marker, place an "X" at the TOP-RIGHT corner of slide retainer as shown for future reference.



8. Remove the four screws from the slide retainer.

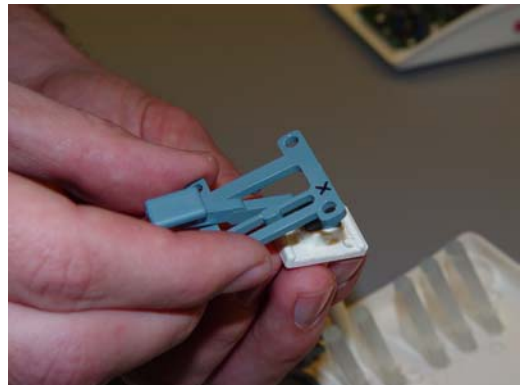


9. Remove the slide and the retainer assembly from the top cover.

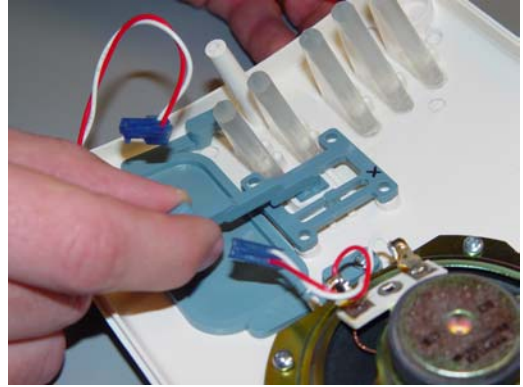


10. Discard the original four screws and slide.

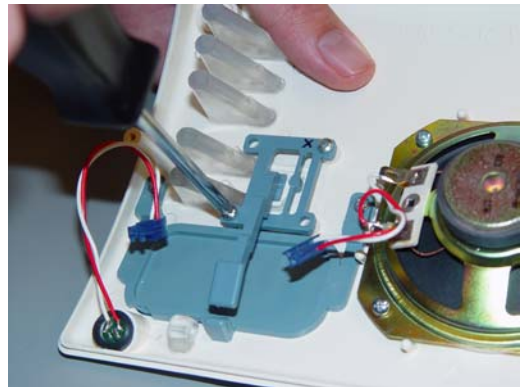
11. Place the new slide in the retainer.



12. Position the assembly in place with the "X" located in the TOP-RIGHT corner where it was originally marked.



13. Install the four new screws to hold the assembly in place. IMPORTANT: DO NOT OVER TIGHTEN THE SCREWS TO THE POINT THEY STRIP THE PLASTIC.



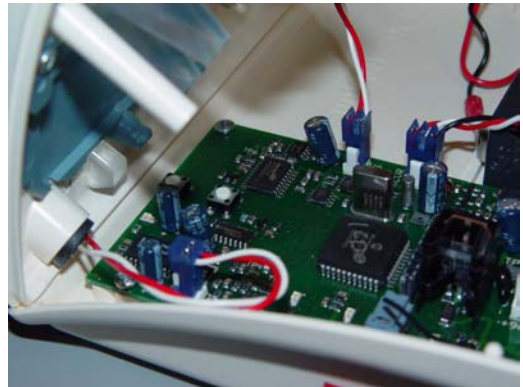
14. Make certain the new assembly slides appropriately. If not, make certain the "X" is in the same location originally marked in step 7 above.



15. Place the top cover near the front of the RA400.



16. Reconnect the speaker and the microphone to the circuit board as shown. The connectors will only go on in one direction. Notice the direction of the wires installed in the picture.



17. Lay the top cover down on the RA400 and replace the two screws in the bottom of the unit. DO NOT OVER TIGHTEN.

18. It may be desirable to mark the back or bottom of the RA400 to indicate this particular unit has the Enhanced HOME/AWAY switch installed.

